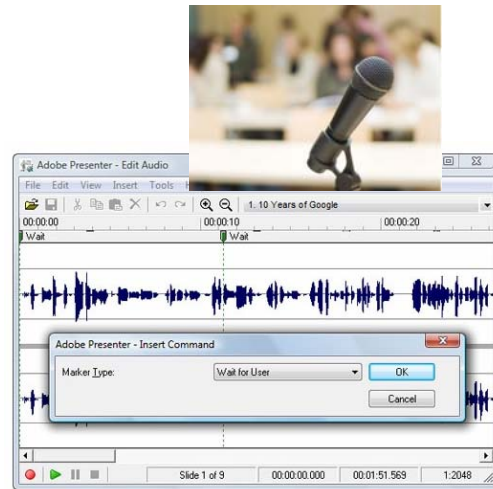


How to Produce Online Learning Material?

Artwork



Source: GoogleImages



Implementation



EcoLearnIT – Implemented Digital Formats

The following digital formats can be used to build RLOs in *EcoLearnIT*:

- *.txt (ASCII text)
- *.doc (MS Word 2003, 2007)
- *.ppt, pptx (Power Point 2003, 2007)
- *.jpg (JPEG lossless compression for photographic images)
- *.png (Portable Network Graphics – bitmap image format)
- *.gif (Graphics Interchange Format - limited to 8 bit or 256 colors; suited for line drawings and textural images)



Workshop 'Integrated Education, Research and Extension – E-Tools & RLOs' (2009)

Grunwald S. and B. Hoover. 2008. EcoLearnIT Manual (Version 1.0) Digital Repository of Reusable Learning Objects. Available at: http://ecolearnit.ifas.ufl.edu/EcoLearnIT_Manual.pdf

EcoLearnIT – Digital Formats

The following digital formats can be used to build RLOs in *EcoLearnIT*:

- *.flv (Flash video)
- *.mp3 (audio)
- *.swf (Flash animation)
- *.zip (Adobe Presenter format – Power Point with audio recordings)



Workshop 'Integrated Education, Research and Extension – E-Tools & RLOs' (2009)

Grunwald S. and B. Hoover. 2008. EcoLearnIT Manual (Version 1.0) Digital Repository of Reusable Learning Objects. Available at: http://ecolearnit.ifas.ufl.edu/EcoLearnIT_Manual.pdf

Software to Produce E-Learning Materials

- Text: MS Word
- Artwork: Power Point; Adobe Photoshop, Adobe Fireworks, Adobe Illustrator
- Animations (interactive features): Adobe Flash
- Audio recordings: Adobe Presenter
- Video: Adobe Premier, Final Cut Pro
- Screen recordings: Camtasia

Mention of company or trade name does not constitute endorsement by the University of Florida, Soil and Water Science Department or the instructors or this course.



Resolution

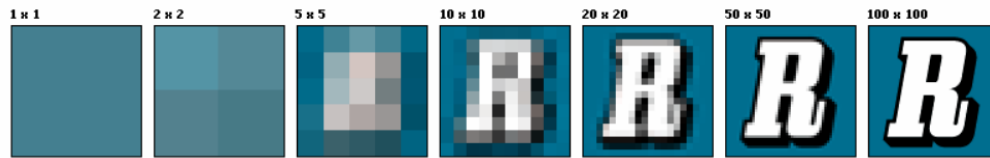
- **Resolution:** The level of detail of an image
- The spatial resolution of computer monitors is generally 72 to 100 lines per inch, corresponding to pixel resolutions of 72 to 100 pixels per inch (ppi)
- Recommended resolution: 72 ppi (or dpi)
- Displaying an image at a higher pixel resolution will not add any image quality (rather it slows loading of the image)
- Megapixels: Total number of pixels in an image (pixels per width x pixels per height)



Resolution

Example:

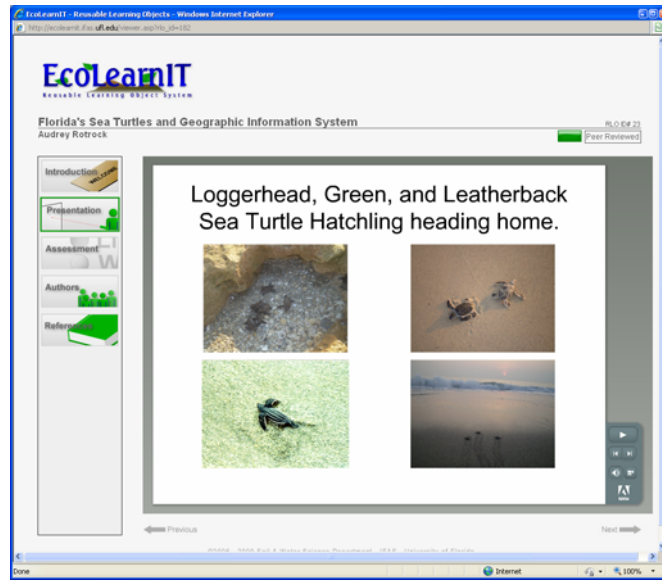
Image 2048 pixels in width and 1536 pixels in height =
3,145,728 pixels or 3.1 megapixels



http://en.wikipedia.org/wiki/Image_resolution

Resolution

http://ecolearnit.ifas.ufl.edu/viewer.asp?rlo_id=182&final_id=23



Workshop 'Integrated Education, Research and Extension – E-Tools & RLOs' (2009)